

spells comfort at work

WAV 2

MONARCH



Sports Design Concept



Sports and work share many similarities than first meets the eye. Performance, focus, speed, victories, rewards. Your equipment is crucial to success.

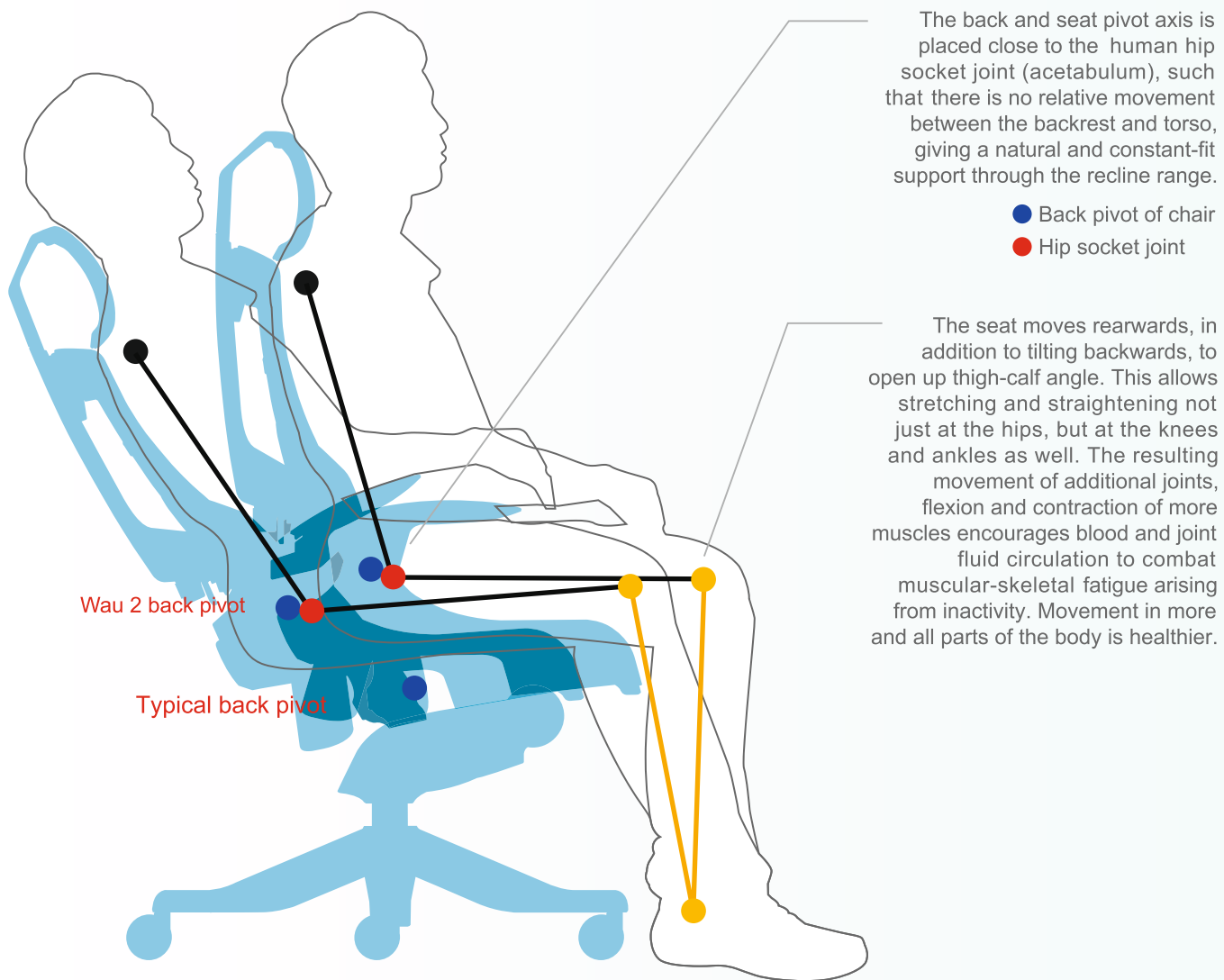
We envisioned a deep scalloped form that would cradle and wrap the user, resembling the heel cup of a skiboot or inline-skate as well as recalling the bucket seat design of a concept sports car. Another characteristic is the soft-rigid element much found in sportsgear, to combine flexibility for comfortable fit and effective force transfers. The extrovert appearance is intentional, to express its high performance purpose.

Applying the sports gear concept to office furniture is revolutionary, yet makes perfect sense. After all, both function and interfaces with the human body. Like many cutting edge sports equipment, Wau 2 combines excellent ergonomics to extract human performance and trendy styling to elicit self confidence and satisfaction as you perform.

Qualities that are very welcome at work.

Recline-glide Motion

Matches human joint points and stretches more of your body



Soft Touch Armpad

Comfortable Yet Durable

Button Free

Simple Adjustments

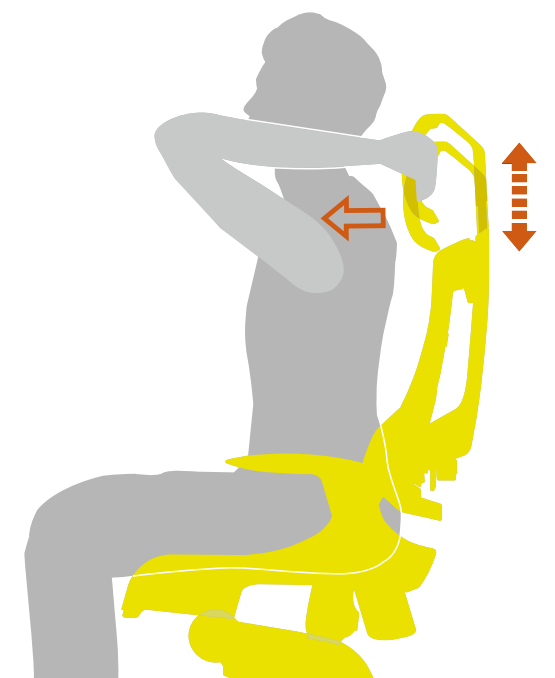
The backrest, armrest and headrest do not employ buttons or levers, to make adjustments quick and intuitive. Just grab the armpad, back shell or headpad, and lift it to unlock. Slide into desired position and release.

Button Free Adjustments

Backrest Height
Headrest Height
Armrest Height
Armpad Swivel

Other Adjustments

Lumbar Pad Depth
Recline Tension & Lock
Seat Height





Looking 'wow' from every angle.

Three types of seating surfaces can be selected to suit the interior mood, formality and individual taste.

- Mesh surfaces
- Padded textile or leather
- Moulded elastomer

Wau 2 can be further customized with options:

- Headrest (height adjustable)
- Armrest (swivel and height adjustable)
- 2 Frame Colours : White or Black
- 3 Base Colours.



708BMBG65VB

Mesh Surfaces

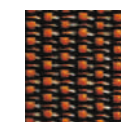
Mesh surface create a light and airy, yet technical appearance. Seat, back and headrest surfaces in a translucent suspension mesh. This mesh is constructed using high-tensile elastomeric filaments that do not lose tension over time. A large 'waterfall' roll off means you can barely feel the seat front edge.

Colours

6 standard colours.



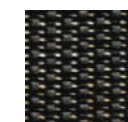
NW44
Deep Red



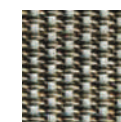
NW45
Mandarin



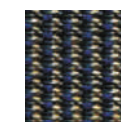
NW46
Olive



NW41
Charcoal



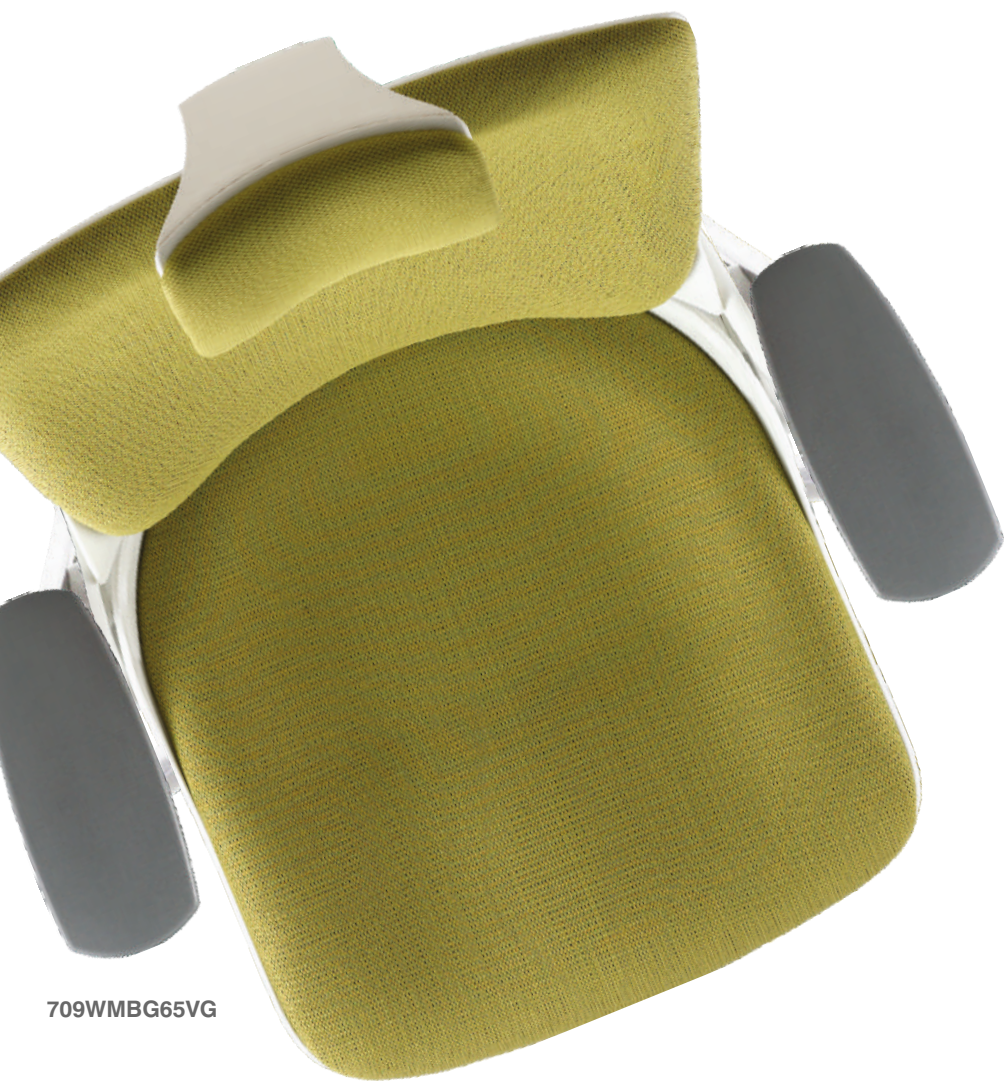
NW42
Snowy



NW43
Royal Blue



709WMBG65VP



709WMBG65VG

Fabric / Leather Surfaces

Padded textile or leather exudes warmth and coziness, as well as lending some organic texture. These models will have the seat, back and headrest all in the same colour material upholstered over foam.



708BMBG65VB



708WMB A00VP

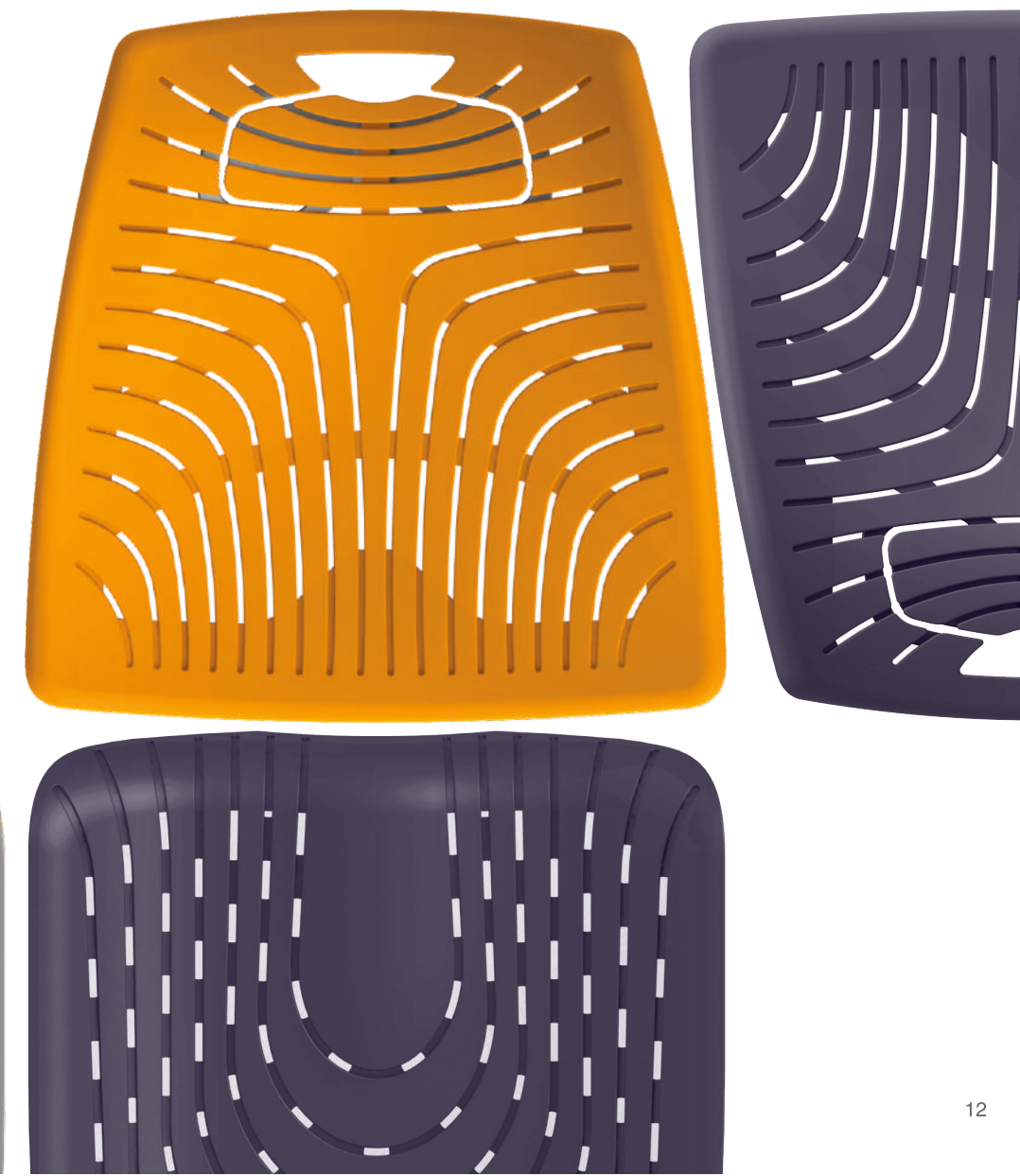


Molded Elastomer

makes it possible to engineer flex-zones tailored to suit different parts of the body, as opposed to an uniform tension pressure provided by mesh.

Colours

2 standard colours. Other colours available with minimum quantity requirements.



Specifications



- Headrest : Adjustable for height.**
White or black outer shell and grey inner shell of molded polypropylene (100% recyclable)
- Backrest : Adjustable for height and lumbar depth.**
White or black outer shell, grey inner shell, lumbar knob and caps of polypropylene (100% recyclable). Back frame in white/black fiber-reinforced polypropylene (100% recyclable).
- Fabric/Leather surfaces :** Upholstered over polyurethane foam (recyclable into carpet padding, wadding etc)
- Mesh surfaces :** 76% elastomer/24% polyester high tensile mesh.
- Elastomer surfaces :** Coloured SEBS – type thermoplastic elastomer (TPE) overmolding (100% recyclable with PP into flexible, impact-resistant PP products)
- Armrest : Adjustable for height and swivel angle.**
Armpad of integral PU foam in standard grey colour, moulded over a PP shell. Armrest upright parts in fiber reinforced polypropylene. (100% recyclable).
- Seat : Adjustable for height.** White or black outer shell and grey inner shell of injection-molded polypropylene (100% recyclable)
- Mechanism : Adjustable Tilt tension and Tilt Lock control.** Main structure and backbone of diecast aluminum alloy 100% recyclable. Covers in grey molded polypropylene (100% recyclable). Levers and knob of molded polyamide (nylon). Internal hardware of steel.
- Base :** Five-prong base of die cast aluminum alloy (100% recyclable) in epoxy powder-coating or polished finish. 60mm dual-wheel castors of moulded polyamide (nylon).
- Durability & Safety :** designed to BIFMA X5.1:2011 standards for durability and safety.
- Environmental :** Wau 2 can be easily disassembled for recycling. Recyclable content is up to 63%.

Base Options



VG Silver Epoxy Aluminium

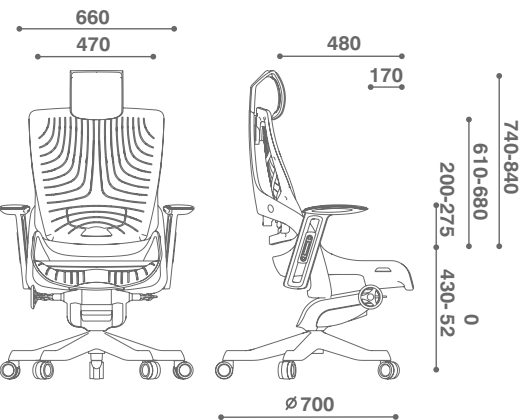


VB Black Epoxy Aluminium



VP Polished Aluminium

Dimensions (mm)



708BMBA00VB

MERRYFAIR®



www.monarchergo.com

MONARCH

Corporate Office

Monarch Ergo Pvt. Ltd.

304, Bhuvana Towers, S D Road,
Secunderabad 500 003, Telangana, India.

M: +91 9701116999

contact@monarchergo.com

spells comfort at work

Ahmedabad : Bangalore : Chennai : Delhi NCR : Hyderabad : Kochi : Kolkata : Mumbai : Pune : Visakhapatnam